

Surface Data Acquisition System

EuSan Industrial Land, No.10 Yanchang Road,
Yanjiao Developing Area, Sanhe, Hebei Province,
PR China Post Code: 065201
Tel: +86 316 3310623/3310633/3395057
Fax: +86 316 3357587
Website: www.unioiltech.com

Surface Data Acquisition System (SDAS) is used to acquire data from a well test, extended production test or platform process plant and data can be output to screen, disk, printer or other PC's connected to LAN.

SDAS is new generation PC based system for use with WindowsNT .

“Plug and play” design is adopted for interfacing the system with sensors and third party equipment.

SDAS uses host computer to gather, process and transmit data and sensor is to acquire raw measurement.

SDAS could monitor virtually any number of sensors, while simultaneously performing multiple operations on the data, both real-time and historic.

AGA-3 report is implemented to calculate gas rate.

Interface box include 16 analogue channels which take standard 4-20MA signal and 8 digital channels which take pulse signal from turbine meter.

Equipment rental and on stock sales available.

Features	Benefit
Safety on site	SDAS features a complete visual/audible alarm system which can be configured, with upper and lower limits, to alert the operator when any abnormalities occur
On site prevention of problems	With the capability of trending any parameter in real time, problematic development can be easily identified prior to it becoming serious. Examples of this can be hydrate formation, steam failure or temperature induced pressure rises
Well performance indicator	SDAS monitors all parameters simultaneously. This, for example, allows stable separator conditions to be identified prior to sampling
Data presentation	With numerous parameters being collected through the facility, SDAS allows the complete process to be monitored from one central point
Cost savings through reduced downtime	Should problems occur during operations the SDAS can be used to analyse where and why these problems occurred. This can be particularly useful for identifying leaks, control line problems and corrosion problems. Early warning often allows remedial action to be taken before the problem affects the viability of the test
System versatility	Virtually any sensor can be monitored by the SDAS including wind speed, heave monitoring, sand production, downhole surface read-out gauge or BOP temperature sensor. Standards systems are configured to monitor three stage separator systems which are typical to EWT hookups, qualified personnel can customise SDAS to specific client requirements while on site

Surface Data Acquisition System

EuSan Industrial Land, No.10 Yanchang Road,
Yanjiao Developing Area, Sanhe, Hebei Province,
PR China Post Code: 065201
Tel: +86 316 3310623/3310633/3395057
Fax: +86 316 3357587
Website: www.unioiltech.com

SDAS includes the following:

1. 1 PC for data processing: PC based on a desktop Computer with at least the following specifications; Pentium, TFT (true colour) screen, 2 gig ram, at least 500 gig hard drive, DVDRW player with sound blaster card. Includes licensed software to calculate, display, print and export data.
2. 1 Interface Box: Interface with up to 16 analog and 8 digital inputs, cabling connections, intrinsically safe.
3. 1 Printers (1ea Laser Color and 1 ea. Black and White) for Real Time Report & Graphics. Both printers are being continually updated by the respective manufacturer and hence vendor will supply these brands or the latest version of the above mentioned printers.
4. 1 Un-interruptible Power Supply Unit to supply (2) hours of power during power outage.
5. 1 lot, Cable and Connectors from main computer to junction box for 16 analog and 8 digital sensors consisting of ;
 - (4) x Multi-core (5 channel) 50m length and,
 - (4) x Single core 100m length.
 - Cable Spoolers for above
 - End connections for all cable
8. 1 Lot, Data Acquisition Sensors as follows:
 - 2 Ea. Pressure Sensor, 0-10k PSI
 - 1 Ea. Pressure Sensor, 0-5k PSI
 - 1 Ea. Pressure Sensor, 0-2k PSI
 - 1 Ea. Differential Pressure Sensor, 0-400INWC
 - 4 Ea. Temperature, 0-350°F
 - 3 Ea. Flow Rate Totalizers included with Separator
 - 1 Ea. Tubing Cutter
 - 1 Ea. 3m 3/8" tubing (316 SS)
 - 4 Ea. 1/2" NPT M X 3/8" Tubing fitting
 - 4 Ea. 1/4" NPT M X 3/8" Tubing fitting
 - 10 Ea. 1/2" NPT Nipple (for Pressure Sensor)

Note, Pressure and temperature Sensors have Local LCD Readout and are Rosemount type.

Surface Data Acquisition System

EuSan Industrial Land, No.10 Yanchang Road,
 Yanjiao Developing Area, Sanhe, Hebei Province,
 PR China Post Code: 065201
 Tel: +86 316 3310623/3310633/3395057
 Fax: +86 316 3357587
 Website: www.unioiltech.com



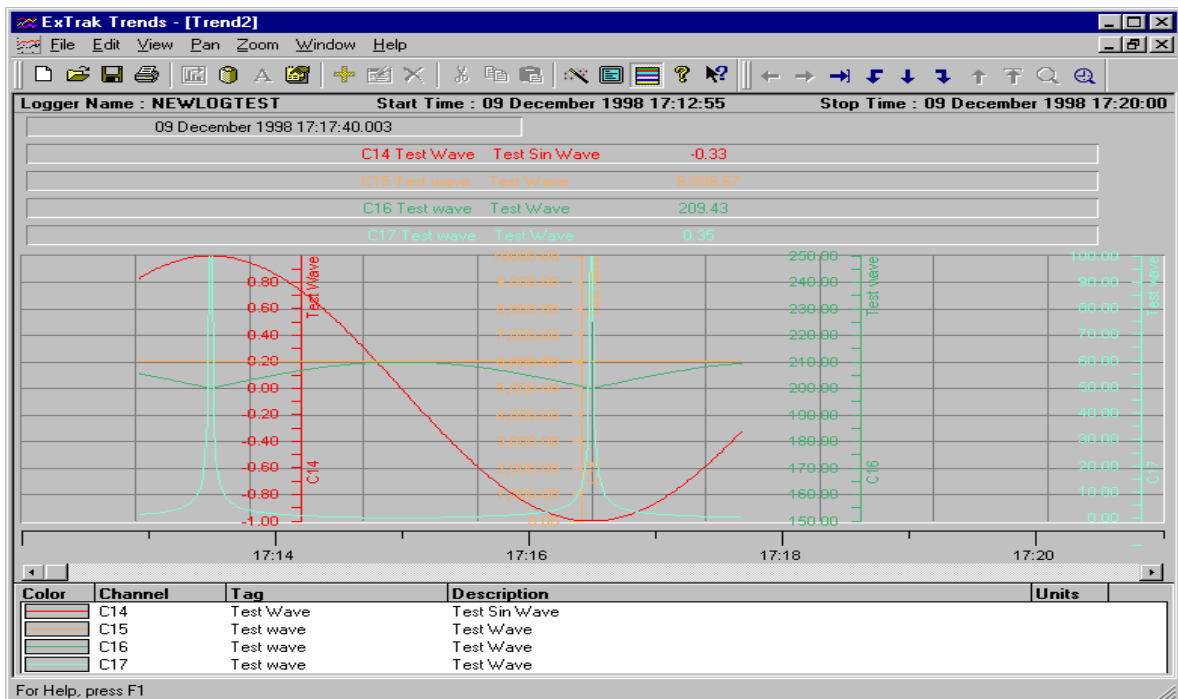
Interface Box



Multi Core Cable



Single Core Cable



English Version Software